



SPARE PARTS – TOOLS – WHEELS
Modern storage concepts for car dealerships

Locator storage systems – computer-aided parts storage

Shorter routes – reduced picking times – optimised space

The idea behind this concept is simple. The starting point is a standard fixed location warehouse. However, instead of all SKUs in the warehouse being arranged by order number or name, we store the articles according to their features. These include the size, weight, value, hazard potential (for hazardous goods) and above all, the turnover frequency.

Entering and evaluating this data would hardly be possible for human beings. For this reason, we use a special computer program that calculates the optimum warehouse layout from all the article master data obtained, in combination with the layout of the warehouse. The warehouse is then set up based on these results. In this course of action, we also make sure, that the new processes are ISO-compliant.

The positive effects are noticeable right away: Your staff members will find the parts they are looking for more quickly, need less time for picking, and have more time available for other tasks. After all, the customer is not paying for the time needed to locate a specific spare part, but for fitting the part professionally. With our locator warehouse, you reduce picking times by 50-70%. As a result, you will be better able to take care of your customers.

Once we have set up the warehouse in line with the computer calculations, the articles most frequently requested will be located in a radius of just 5 m around the outgoing goods section, for example. In addition, the warehouse is not only route-optimised, but also compressed. Up to 50% of the area then becomes available for other uses. These benefits materialise for new buildings, but also when modernising and restructuring existing warehouses.



Benefits at a glance

Area/cost savings in storage

- ▶ Up to **50%** saved space
- ▶ Up to **50%** lower operating costs

During operation

- ▶ Up to **70%** shorter routes during order picking = less time required for order picking
- ▶ Up to **50%** shorter routes during inward storage
- ▶ Up to **70%** faster inward storage
- ▶ Less training time required for new staff members
- ▶ Your qualified staff spend more time on value-adding after-sales activities
- ▶ Inventory tasks are greatly simplified

In quality management

- ▶ Considerably reduced error rate
- ▶ Clearly defined processes conforming to ISO
- ▶ Inward and outward goods entries clearly regulated
- ▶ Stock levels considerably more accurate than in the past

Ready for future developments

- ▶ Introduction of new order picking strategies (barcode scanners or pick-by-voice) is possible at any time

Service all from one source

- ▶ We offer: Consulting, individual planning, full installation as well as relocation planning and support





Locator storage systems for special tools

Reliable and ISO-compliant processes

Car dealerships, service centres and workshops are increasingly looking for options to store special tools in a space-saving yet easily accessible and clearly arranged way. Our new storage concept based on the reliable locator system is the ideal solution to this problem.

We have transferred this tried and trusted system to the storage of special tools. It means that all tools are classified according to criteria such as size, weight and frequency of use, compliant with ISO standards, of course. The warehouse layout based on these values and calculated by the computer program is thus optimised in terms of both space and routes.

We label all storage locations clearly with barcodes, numbers and pictograms to avoid storage errors and ensure controlled and reliable processes.

As a result of the restructuring, your staff will spend less time searching for and replacing tools, and more time on their actual work.



Benefits at a glance

Avoids storage errors

- ▶ Reliable tracking process for tools used
- ▶ Clean and clearly structured storage of special tools
- ▶ Sorting of tools possible by assembly or part number

During operation

- ▶ Faster processing thanks to simplified access and easy removal of the tools
- ▶ No expert knowledge required for working in storage systems using the locator principles

In quality management

- ▶ Clearly defined processes conforming to ISO

Space-saving storage

- ▶ Compressed warehouse
- ▶ Optimised space utilisation



Everything in its place

Using location labels, barcodes, storage space numbers and pictograms, every special tool is assigned a specific storage location.

Rapid location of tools and clear organisation for storage systems in the smallest possible space are the key features of a special tool storage system applying the locator principle.

Using special holders for pictograms and part numbers, the system and the corresponding special tools are visible at a glance.

IT-controlled storage location management can be implemented at any time.

Wheel storage – Stable, safe and flexible

A wheel store is only efficient if it meets the requirements at the site in question. What is needed is system that is space-saving, as well as flexible and safe. Wheel store systems from SSI SCHAEFER meet precisely these requirements. Whether the wheels are stored side-by-side or behind one another, with or without roller tracks, in stationary shelving or as a mobile solution, on up to 9 storage levels, with or without roof/wall coverings. The options for wheel storage design are virtually limitless.

The standard design places one set of tyres next to another in the single-deep rack. A more cost-effective solution is storing wheels in pairs in double-deep shelving, i.e. one set of tyres occupies two double-deep storage locations. If a mobile solution is required, the single-deep and double-deep shelving can also be installed as a mobile version. The mobile shelving can be driven manually or electrically.

A unique storage option is offered by the new quad-deep shelving system. In this case, the wheels are stored in sets and on roller tracks in one channel – easy-to-use and space-saving. The four wheels are inserted into the channel behind one another with no significant effort required. The dynamic nature of the shelving is shown in the removal process. When a wheel is taken out, the wheels behind it roll forwards.

All stationary systems can also be implemented as an integrated building solution with complete roof and wall coverings. To achieve this, we utilise our decades of experience in high bay racking and can look back on a large number of reference projects.

This means that we can always offer customised and above all, safe and functional systems with maximum efficiency to meet all requirements.

Benefits at a glance

New construction and conversions possible

- ▶ Systems can be integrated into existing buildings
- ▶ Integrated building solution can be implemented with complete roof and wall coverings for stationary systems

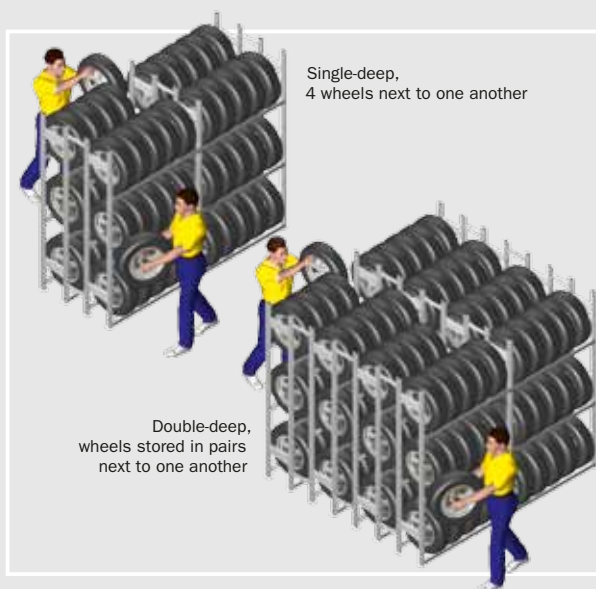
Flexible system versions and heights

- ▶ Shelving can be implemented as stationary or mobile solution
- ▶ Various versions of single-deep storage can be implemented adjacent to one another, through to quad-deep storage in sets
- ▶ Projects up to 9 storage levels are implemented as standard, with greater heights available on request

Space-saving storage

- ▶ Compressed storage using a mobile solution
 - with a single-tier storage solution up to 85% increase in storage space
 - with multi-tier storage solution up to 100% increase in storage space
- ▶ Optimum space utilisation thanks to individually customised solutions





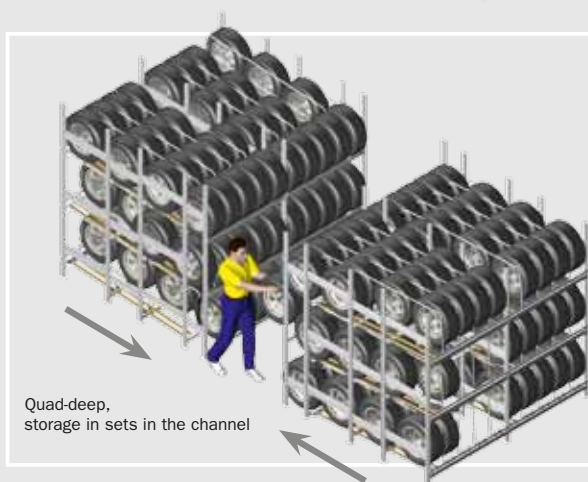
Single-deep,
4 wheels next to one another

Double-deep,
wheels stored in pairs
next to one another

Single/double-deep, stationary shelving

With the standard, single-deep system version, the four wheels are stored next to one another on one single-deep shelf. A more efficient solution is to store the wheels in pairs on a double-deep shelf, i.e. two wheels are stored behind one another on one shelf.

Single and double-deep shelving systems can also be installed as a mobile version, with manual or electric drive units.

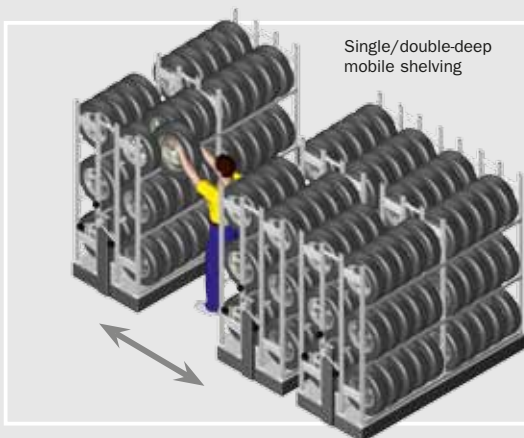


Quad-deep,
storage in sets in the channel

Quad-deep, dynamic shelving

With the quad-deep, dynamic shelves, one set of wheels is accommodated conveniently in a row behind one another in a wheel channel, saving space and allowing ergonomic removal.

This type of storage combines live storage technology and standard shelving. After removing the foremost wheel, the remaining ones move forward on roller tracks into the first, easy-to-access position.

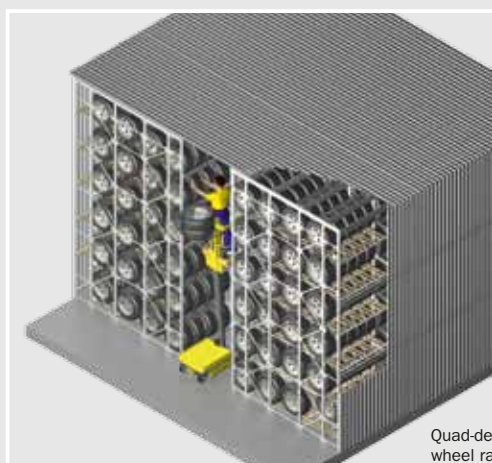


Single/double-deep
mobile shelving

Wheel storage with mobile shelving

The mobile shelving system requires only one service aisle to be open at any one time, as the shelving units are placed on mobile bases and aisles can be created as needed by shunting.

An increase in valuable storage capacity of up to 85% for single-tier installations and over 100% for multi-tier installations can be achieved with this method.



Quad-deep, dynamic
wheel racking in clad rack design

Wheel storage in clad rack design

All stationary systems can also be implemented as an integrated building solution with complete roof and wall coverings (clad rack construction) as standard with up to 9 storage levels (other heights available on request). Here we use our decades of experience in high bay racking and can look back on a large number of reference projects.

**SSI SCHÄFER****FRITZ SCHÄFER GMBH**

Manufacturer of warehouse, production
and office equipment, waste manage-
ment and recycling



Fritz-Schäfer-Straße 20
D-57290 Neunkirchen/Siegerland

Telephone +49 / (0) 27 35 / 70-1

Fax +49 / (0) 27 35 / 70-3 96

eMail info@ssi-schaefer.de

www.ssi-schaefer.com

