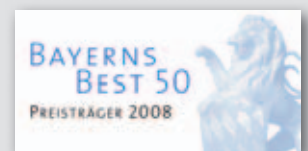




RETROFIT@SSI SCHAEFER

Better, faster, more efficient –
Improve your warehouse performance



► We take your operating storage facilities to the cutt



Operational safety

Often spare parts are no longer available and immediate action is necessary. SSI SCHAEFER uses only standard components supplied by brand name manufacturers, so replacement parts are available for longer.

Sometimes, the original manufacturer of specific systems is no longer in business. This means that the necessary Know-how for the maintenance and service of the system is no longer available, making system upgrades impossible. However SSI SCHAEFER is the market leader for Intra-logistics solutions in Europe and can continue to maintain the system even after the original company no longer exists.



Retrofit

Serial technology, high maintenance drives, as well as high-power consumption and old proprietary controls – we establish communication on TCP/IP and replace the old drives and converters with modern units. The controls are modified using the Siemens S7 model which has minimal impact on current production.



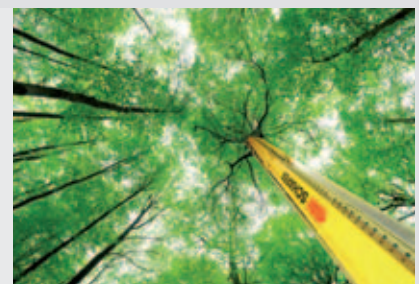
Increased Efficiency

Retrofit is usually synonymous with improved performance. We can achieve a significant increase in performance by optimizing the behaviour of storage and retrieval machines. SSI SCHAEFER can also update the old processes, which may not have evolved like the rest of the company.

- SSI SCHAEFER can achieve performance increases of up to 30% in some cases

Green Logistics

Storage and retrieval machines equipped with modern controllers provide a huge potential for energy saving. Using the right combinations of efficient components adapted to the application can result in optimal energy savings.



Intelligent DC coupling:

The two main storage and retrieval machine axes are coupled via the DC intermediate circuit. Kinetic and potential energy are then fed-back into the grid.

Intelligent control of drive and lift drive with MOVI-PLC®:

Minimum drive and lifting times for maximum double cycles. Control of the axes is achieved while considering energy coupling. Released energy is used by the second axis in the system.

Storage and retrieval machines with Regenerative Power Supply:

Storage and retrieval machines can save up to 60% energy with regenerative power supply. Its use in lifting alone can save up to 66% energy.



Drive / Lift drive
MOVI-DRIVE®

Control unit
MOVI-PLC®

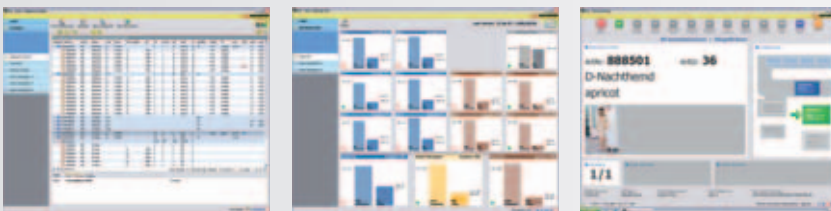
Regenerative
Power Supply

ing-edge of technology.

IT Retrofit

Modernization of IT systems is necessary if spare parts for your server or other components are no longer available.

An IT Retrofit improves the performance of your warehouse when old processes no longer meet the performance standards of your company. During the specification phase we will discuss all your requirements in detail and provide you with a customized solution.



Current user dialogues, which are ergonomically and optimally featured, simplify the processes in your warehouse and minimize the need for training. And, we only use components from brand name manufacturers which can be easily replenished.



IT Safety: We offer a solution tailored to your needs which provides the maximum cost savings.

Additional features

SSI SCHAEFER offers its full range of services for Retrofit or separately to provide system enhancements.

These services include:

- ▶ Additional storage aisles
- ▶ New conveyor lanes
- ▶ Changes to existing lanes
- ▶ Replacement of components, e.g. discontinuous to continuous conveyor technologies
- ▶ Changes to rack design for additional pallet storage positions



▶ Retrofit with SSI SCHAEFER –
It's worth it.

List of satisfied customers:

Customer	Site	Country	Components	Range of Activities	Retrofit Year
Continental	Korbach	Germany	2 SRM's	Modernization of drives and controls unit	2001
Dirks Gabor	Mindelheim	Germany	5 SRM's, Pallet conveyor system	Modernization of drives and controls unit	2002
Geodis	Luedinghausen	Germany	9 SRM's, 23 AGV's, Pallet conveyor system	Modernization of drives and controls unit	2010
Merck	Darmstadt	Germany	Pallet conveyor system	Modernization of drives and controls unit	2007 / 2008
Brose	Hassfurth	Germany	3 SRM's, Pallet conveyor system	Modernization of drives and controls unit	2008 / 2009
Wepa	Mainz	Germany	6 SRM's, Pallet conveyor system	Modernization of drives and controls unit as well as MFR	2008
Plastal	Hambach	Germany	7 SRM's, Pallet conveyor system	Modernization of drives and controls unit	2000 – 2011
Braun	Marktheidenfeld	Germany	6 SRM's, Pallet conveyor system	Modernization of drives and controls unit	2008 / 2009
Volkswagen	Hannover	Germany	4 SRM's	Modernization of drives and controls unit	2006 / 2007
KHS	Dortmund	Germany	3 SRM's, 2 small parts SRM's	Modernization of drives and controls unit	2009
Spimanco		Saudi Arabia	2 SRM's, 1 convertor, Pallet conveyor system	Modernization of drives and controls unit	2009
Volkswagen	Puebla	Mexico	3 SRM's	Modernization of drives and controls unit	2004
GKW Grohnde	Hameln	Germany	1 SRM	Modernization of drives and controls unit	2003
KVB	Cologne	Germany	1 SRM (curve-going)	Modernization of drives and controls unit	2003
Still	Hamburg	Germany	3 SRM's	Complete Retrofit of SRM's	2002
Stute Logistik	Hilden	Germany	4 SRM's	Modernization of drives and controls unit as well as MFR	2005
Willi Vogel	Berlin	Germany	Material Flow control	Retrofit of MFC's	2010
Nestle	Singen	Germany	Material Flow control	Retrofit of MFC's	2009
Nestle	Weiding	Germany	Material Flow control	Retrofit of MFC's	2008