

# Electronically Secured Drawer Systems – User Dependant Opening Of Individual Drawers

Drawer cabinets with single electronic locking drawers in different sizes and configurations that can be opened and closed with individually designed ID profiles. The easiest way to store all kinds of items and protect them against unauthorized access.



The controlled and easy access to high quality items has a rising value in many areas of industrial production. SSI Schaefer, in cooperation with CONSIGMA, reacted to the demands of the market and developed an electronically secured drawer system that meets these requirements simple and technically up-to-date.

The locking and opening device is connected with an identification profile that is stored on touch less ID cards. The employee holds the ID card in front of the sensor of the drawer cabinet. It opens a user-defined drawer to which the employee is authorized to use.



- ▶ **Availability**  
of tools, production items, spare- and wear and tear parts around the clock, 365 days a year
- ▶ **Optimal security**  
of valuable items against unauthorized access
- ▶ **Short distance**  
storage can be established at site of the production section. This eliminates the distance to a central tool distribution or is reduced drastically

- ▶ **All material**  
is also available to personnel in second or third shift
- ▶ **Easy installation**  
no additional software to program is necessary. Changes in access and controlling of the opening-locking cycles of the individual drawers simply via internet browser
- ▶ **Manned tool distribution can be reduced drastically**  
mainly in non-peak hours and late shift

**If all these factors are applied correctly then our systems pay for themselves in a short time. Especially in companies with multi shifts and / or vast production halls our systems are taken for granted.**

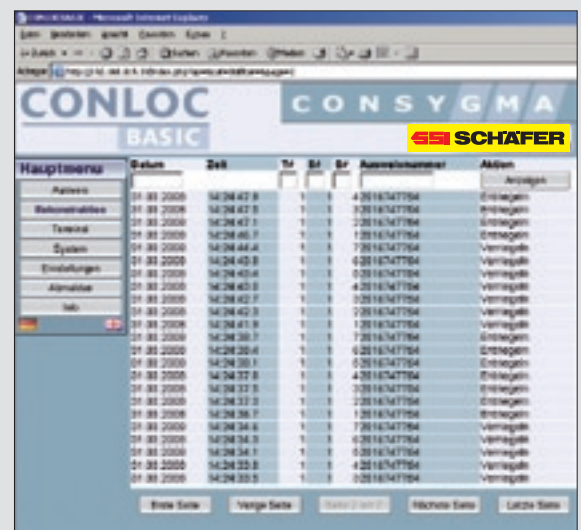
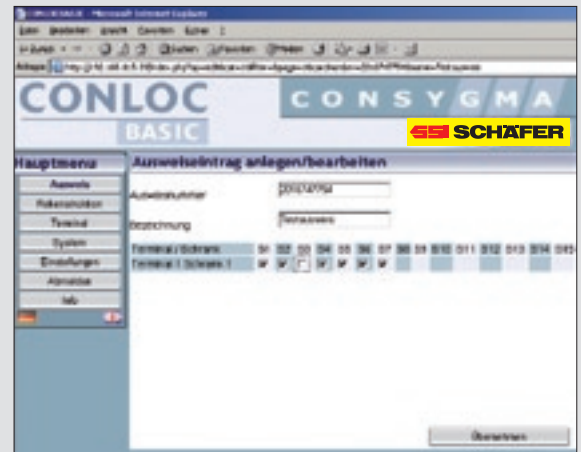
## Software Modul *Basic*

Easy design of the ID cards for the access to the drawers, pullouts, or compartments in connection with data base related analysis function.

The design of the ID profiles is done with user friendly, modern software that can be started from each selected workstation via an internet browser without installing software.

Aside the easy installing of an ID profile, a fast analysis of the access can be done via search and sort functions.

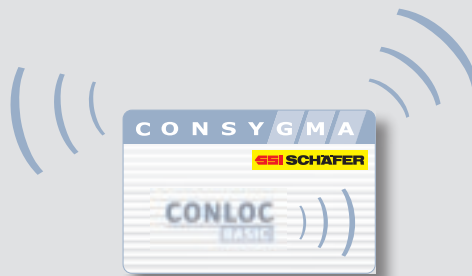
Additional features like multi lingual software, powerless emergency unlocking and simple extension of terminals with additional modules are also part of the electronically secured drawer systems by SSI Schaefer.



**i Additional Information:**  
 Phone: +49(0) 27 35/70-380 or [conloc@ssi-schaefer.de](mailto:conloc@ssi-schaefer.de)

## ID Technologies

SSI Schaefer-locking systems can be equipped with numerous ID technologies like Mifare, Legic, Hitag 1 + 2, EM4102 etc.



**FRITZ SCHÄFER GMBH**

Manufacturing plants for warehouse, production and office equipment, waste management and recycling  
 Fritz-Schäfer-Straße 20 • D-57290 Neunkirchen/Siegerland • Phone +49/(0) 27 35/ 70-1 • Fax +49/(0) 27 35/ 70-576  
[export@ssi-schaefer.de](mailto:export@ssi-schaefer.de) • [www.ssi-schaefer.de](http://www.ssi-schaefer.de)

