

LIGHTER BY DESIGN

Light as a feather yet extremely sturdy –
the new **Euro light container (ELB)**

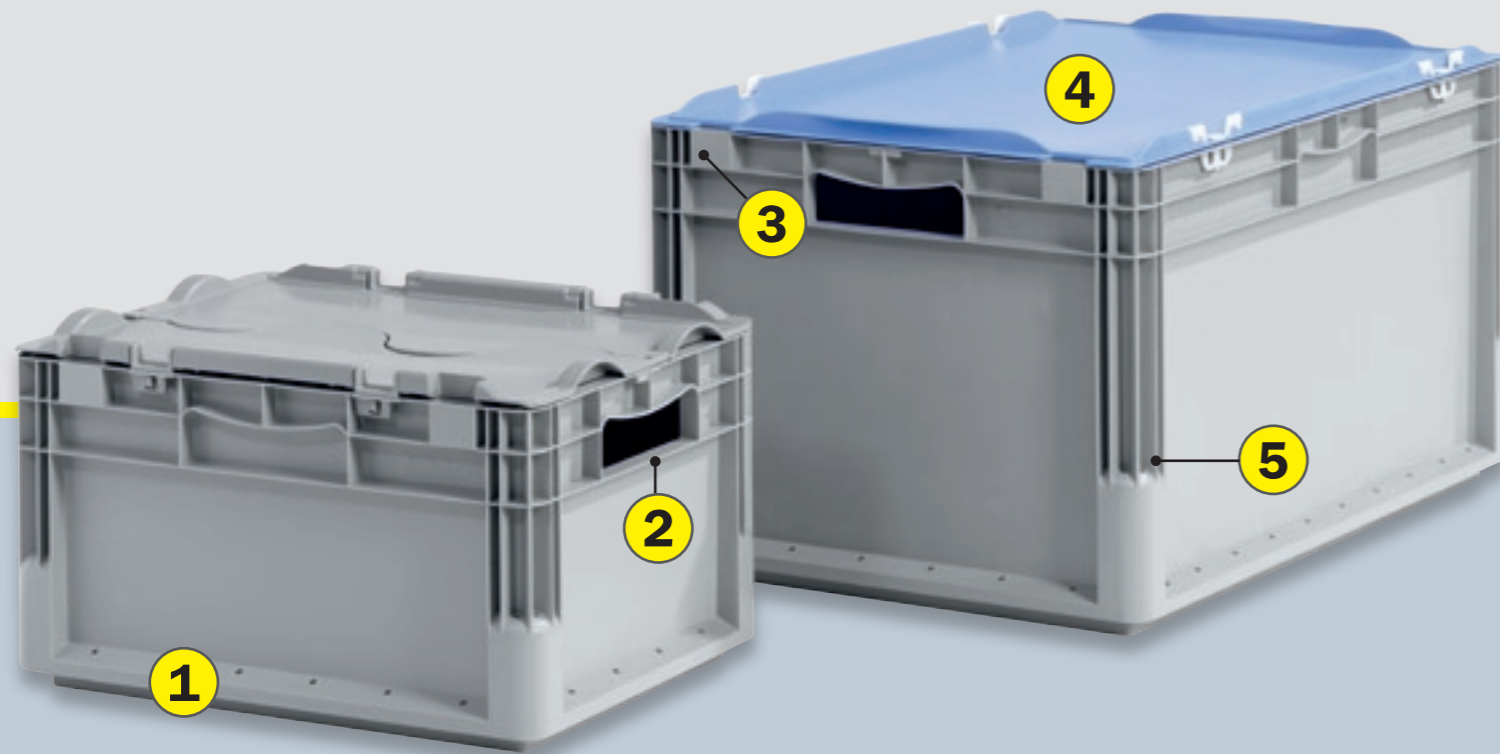
NEW!



Euro light container – the all-round superstar for all everyday situations

SSI SCHAEFER has developed more than 2,000 types of high-quality warehouse, order picking and transport boxes. Our know-how has continually developed through years of experience, use of state-of-the-art technologies and intensive collaboration with customers. Whether boxes are needed for electrical parts, automotive accessories, mail order items, computer chips, food or paperback books – we can develop the right solution.

We have now brought together all our knowledge from all special applications to produce an innovative high-tech product. This all-round container, designed for everyday use, is as light as a feather, extremely sturdy and most importantly sensibly priced. Designed using a new material and new tool technology, the Euro light container is a high-quality product which can be used for virtually any purpose and best of all: it's affordable for all!



1| Stacking rim

Profile-shaped, all-round stacking rim

2| Ergonomic grip opening

Ergonomically shaped open hand grip on both face ends

3| Lifting slot

Lifting slots for handling units

4| Lid

Closes to be dust-tight, sealable
ELB containers can also be safely stacked with the lids fitted

5| Corner post

Basic construction resistant to twisting

Base variants

Depending on the version, the different bases on the containers of the ELB series allow for loads of 20 – 70 kg. Perpendicular sides optimise internal dimensions. Specially-designed corner posts facilitate high stacking loads and easy cleaning.

1| Smooth base (standard version)

For manual handling or transferring items to modular shelving.

2| Ribbed base

Reinforced, diagonally ribbed base with extra all-round ribs (tread) and optimised radii for quiet transport on conveyors.

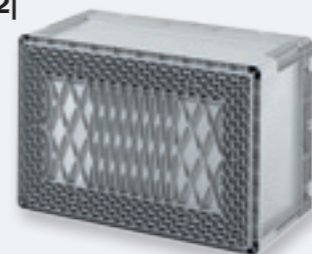
3| Reinforced VS welded base

Welded base plate with sloped base and shaping for optimal running properties and high loads.

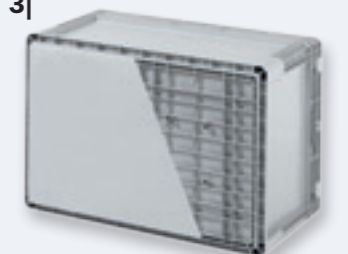
1|



2|



3|



Hinged lid

Lid hinged on one side with fixing clamps

Folding lid

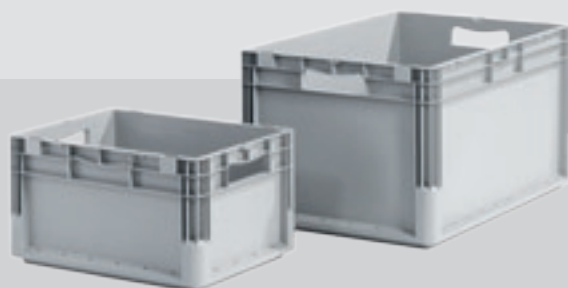
Hinged, two-part folding lid with toothed elbows



Technical data

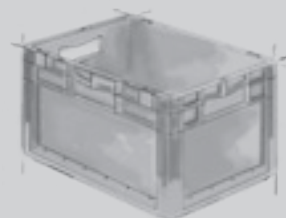
The Euro light container has:

- a load of 20 kg
- a max. stacking load of 400 kg.
(details for versions with standard bases)



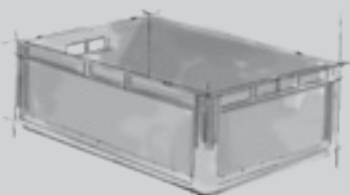
ELB 4120

External dimensions: L 400 x W 300 x H 120 mm
 Internal dimensions: L 355 x W 255 x H 114 mm
 Volume approx.: 10,4 litre
 Shell hand grip at front
 Order no. 56505



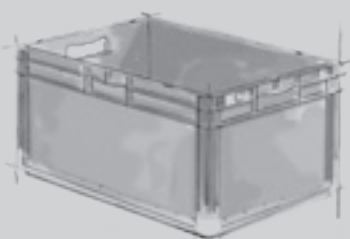
ELB 4220

External dimensions: L 400 x W 300 x H 220 mm
 Internal dimensions: L 355 x W 255 x H 214 mm
 Volume approx.: 19,5 litre
 Grip opening at front
 Order no. 56535



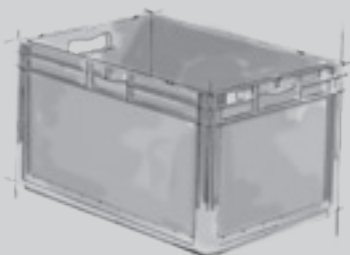
ELB 6120

External dimensions: L 600 x W 400 x H 120 mm
 Internal dimensions: L 555 x W 355 x H 114 mm
 Volume approx.: 22,6 litre
 Shell hand grip at front
 Order no. 56565



ELB 6220

External dimensions: L 600 x W 400 x H 220 mm
 Internal dimensions: L 555 x W 355 x H 214 mm
 Volume approx.: 43,3 litre
 Grip opening at front
 Order no. 56595



ELB 6320

External dimensions: L 600 x W 400 x H 320 mm
 Internal dimensions: L 555 x W 355 x H 314 mm
 Volume approx.: 62,0 litre
 Grip opening at front
 Order no. 56625

elb_en 0479_082010_mm 4/102010 Printed by Druckerei Hachenburg GmbH © by SSI SCHAEFER. We reserve the right to make technical modifications to any of the products shown in this catalogue. Possible colour deviations of the products from the original are determined by printing technology. This catalogue is supplied E&OE.

FRITZ SCHÄFER GMBH

Manufacturing plants for warehouse, production and office equipment,
 waste management and recycling
 Fritz-Schäfer-Straße 20 · D-57290 Neunkirchen/Siegerland
 Phone +49 / (0) 27 35 / 70-1 · Fax +49 / (0) 27 35 / 70-5 76
 export@ssi-schaefer.de · www.ssi-schaefer.com

