

HIGH PERFORMANCE PLANT

Carlsberg brewery contracts out mega investment project

EDITORIAL

Dear reader,

We are delighted to be able to present to you the latest edition of our Customer Journal. The focus this time is on optimised logistics processes using complex total solutions. It is only by networking systems, information and material flows that the processes down the supply chain and in the warehouse can be carried out with optimised costs and transparency.

To bridge the gap between theory and practise, in this edition you can read about concrete examples from users of SSI Schaefer Group products. In addition to large-scale reference solutions, we have included smaller projects as well. However, they all have one thing in common: They are brought to life thanks to the combination of intelligent storage technology and components designed to work in harmony with one another.

Wishing you an enjoyable read. Kind regards

Harrie Swinkels
Managing Director
of SSI Schaefer Noell, Giebelstadt



One of the largest investment projects in the history of Carlsberg has just been awarded to SSI Schaefer. The brewery is closing down its traditional production plants in Copenhagen and is merging them into one large production and distribution centre near Fredericia. The main contractor SSI Schaefer Noell, Giebelstadt, is to supply the logistics concept, design planning, shelf construction, pallet conveyor technology as well as the warehouse management system for the new distribution centre.

The new shipping hall alone covers 10,000 m², and the shipping warehouse stands at around 9,000 m².

SSI Schaefer will be creating an 18-aisle, 114 metre long high-rise racks with 70,000 storage spaces. The warehouse processes, designed for an hourly throughput of seven hundred 1000 kilogramme pallets in incoming storage and 800 pallets in outgoing storage, are handled by 18 shelf-servicing devices with double telescopic forks. In addition, a second, eight-aisle

„in-house racking system“ will be set up with 6000 storage spaces for pallets of 500 kilos in weight. These are supplied by eight separate shelf-servicing devices with an hourly throughput of 250 pallets in inward and outward storage.

Over 1600 individual elements will be integrated into the conveyor technology systems. Pallet stackers/unstackers, pallet stack guidance stations, 50 vertical conveyors and eight shuttle vehicles will also be deployed. The warehouse and picking areas will be linked to the racking systems using an electric suspended track system with an overall length of over 4000 metres. 265 vehicles will provide a transfer output of 3000 two-way movements per hour. „It's a challenging system, not just from a technical point of view“, reveals Peter Lambrecht, Project Manager at SSI Schaefer Noell. „In terms of our standing in the European marketplace it is also an important reference project.“ The commissioning of the system is planned for April 2008, with handover and full operation taking place after November 2008.



Complex
MAN's largest spare parts
warehouse in Europe



Individual
Special containers support
seat assembly



Safe
Earthquake-proof shipping
warehouse for Nestlé



Worldwide
SSI Schaefer in the
Dubai Logistics City

MAN's largest spare parts warehouse in Europe



With 50,000 storage spaces, München-Neufahrn is the largest regional warehouse site of the six European Logistics Centres of MAN Nutzfahrzeuge AG. From here, Hellmann Worldwide Logistics has been controlling the parts supply of MAN sites in Southern Germany and neighbouring regions since March. Across 17,200 m², 26,000 spare parts and accessories for commercial vehicles and buses are stored, picked in multi-

ple shifts and dispatched to approx. 400 customers daily. SSI Schaefer carried out the project planning and fitting for the site. This included not only the supply of racking systems, containers, conveyor technology and control, but also operations and office equipment. The core of the logistics centre is the two-storey modular racking storage system with 35,000 storage spaces and the 11,000 pallet and container spaces in the normal, narrow, and wide-aisle warehouse systems. A special feature is

that the racking bays in the narrow-aisle warehouse are not fitted with floors, but with grating strips. „This meant that we were able to reduce not only the loading on the hall floor. Should a fire ever break out, the water from the sprinkler system can penetrate through to the lower racking levels“, according to Thomas Brodowski, Project Manager at SSI Schaefer. The follow-on contract for the second ELC in Paris has now also been awarded to Schaefer.

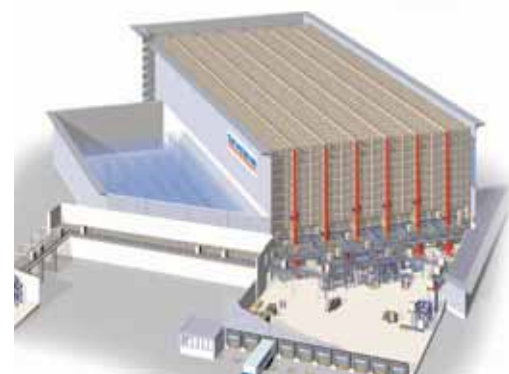
Walgreens on the Net

The Pharmacy America Trusts • Since 1901™



At the end of June, Walgreens Co., the USA's largest drugstore chain, in Anderson County (SC) began operation of their new distribution centre for the east coast. The 70,000 m² logistics centre has been made operational in stages since April. The contract for project planning, from creating the logistics concept through to planning and implementation was awarded to general contractor SSI Schaefer Noell based in Giebelstadt, and the company set up for the US market leader one of the largest and most modern distribution centres in the USA. The 36,500 pallet storage spaces can be accessed up to 4000 times per hour. The mini-load system, in combination with a modular Schaefer Carousel System (SCS), offers more than 300,000 container storage spaces for the latest goods-to-person picking system. This means that up to 40,000 order lines can be picked per hour.

Special solution for small electrical devices



Cost savings thanks to efficient warehouse processes, bundling of external warehouses and clear site specifications were the key reasons as the electrical equipment manufacturer Severin made the decision to construct a central logistics centre at the company's headquarters in Sundern. Following an in-depth comparison of providers, the contract for the new finished goods warehouse with dispatch picking was awarded to SSI Schaefer Noell, Giebelstadt. The new storage complex rose to a height of over 30 metres. Around 8000 m² in area and 36,000 storage spaces for Euro pallets are available in the 107x52x33 metre (LxWxH) high rack racking system. 1500 tons of steel were needed to bring the functioning, fully automated conveyor technology and silo design logistics centre to life. A challenging custom solution – the combination of channel and telescopic storage – allows the inward and outward warehousing of over 1200 different items for shipping. The „ant“ Warehouse Management System controls the automated processes between inward and outward goods movements.

Second XXL pallet silo for Quinn Group

Schaefer UK is currently erecting the structural steelwork for one of Great Britain's largest high rack silo in Newport, Wales. At around 40 metres high, the pallet silo has over 41,000 storage spaces. The customer is Quinn Radiators, part of the multinational Quinn Group which operates in many different fields such as financial services, hotel and building management, cement production as well as radiator and plastic manufacturing. SSI Schaefer is one of

the few companies able to set up silo design high rack racking systems of this height in accordance with the strict guidelines of FEM (Fédération Européenne de la Manutention). This project has been preceded by several orders from the Quinn Group, notably the mega pallet silo completed a year ago for Quinn Glass in North-West England with 281,000 storage spaces and dimensions of 300 x 180 x 35 metres (L x W x H).

High availability of over 30,000 pallets at WEPA

The objectives were clearly defined as the paper goods manufacturer WEPA made the decision to re-structure their logistics and set up a high rack racking system at their main site in Arnsberg-Müschede; site security, concentration on eight external warehouses, automation of the intralogistics and reduction of transport costs. The general contractor for the turnkey construction of the new

central warehouse, SSI Schaefer Noell, Giebelstadt, undertook the construction work on the project, including roof and wall construction, building technology and sprinkler system. In subsequent implementation stages, SSI Schaefer realised the structural steel framework for the automatic high rack racking system, integrated the conveyor and control technology in addition to shelf-servicing equipment and lastly, provided the necessary IT framework by installing the warehouse management software. The new high rack racking system has been in full operation for around six months.





twister for streetware-mode

With the Carhartt brand, the textile company Work in Progress GmbH (WIP) is a favourite in streetwear fashion. To ensure that branded items reach retail outlets quickly, WIP has set up a central distribution warehouse in Weil am Rhein. The storage, picking and shipping processes have been concentrated there and re-structured. During a construction period of just ten months, including building renovation work, the system was created in an existing building close to the company's headquarters. As the general contractor, SSI Schaefer Noell, Giebelstadt coordinated the works and installed a picking hall of around 2500 m², as well as an eight-aisle, automated small parts warehouse with almost 60,000 storage spaces for cartons and containers. 48,700 containers are in circulation. Two shelf-servicing devices with Twister V load suspension equipment, among other units, provide a throughput which is almost double that of the previous solution of up to 1350 units per hour. Thanks to the Twister V and the combination of the two picking strategies „goods to staff“ and „staff to goods“, WIP can cover seasonal peak times and distribute the workload evenly to both the system and the staff.



High performance picking warehouse for mail order company

The Hermes Group, founded in 1949, is now Brazil's leading mail order company. 400,000 consultants distribute 5 million catalogues across the country. E-commerce is playing an increasingly important adjunct to the catalogue business. The warehouse, picking and shipping processes are concentrated in an area of approx. 10,000 m² at the site in Rio de Janeiro. From here, the company dispatches up to 16,000 orders every day. The core of the warehouse complex is the picking area supplied by SSI Schaefer Peem, Graz, Austria. A picking



line with 16 picking stations as well as two mirrored lines, each with 22 pick-by-light stations (PBL), run through the logistics centre. Each hour, 1600 operations are picked without documentation. Maurício Almeida, operations manager

at Hermes, explains why SSI Schaefer was chosen as the supplier: „With our various shapes and quantities of items for each order, a PBL system is the best picking solution.“

SPECIAL CONTAINERS support seat mounting



Sitech Sitztechnik GmbH in Wolfsburg, manufacturer of car seats, has put a new seat assembly into operation. Each day, up to 3000 ready-to-fit seat fittings are shipped to vehicle fitters at the Volkswagen plant. Key components of the new material flow concept include the special containers from SSI Schaefer. These are used to house parts and follow the seats along the assembly belt on workpiece carriers. As the container needs to be modified to the exact contours of the

workpiece carrier, Schaefer separated two standard boxes and inserted them back together according to the length measurement required in the cut & weld process. To position the parts securely,

TechnoFoam. The seat panels are transported in standard containers. These are also fitted with special inserts. By combining special and standard containers, Sitech has been able to reduce its ma-



the floors and side walls are fitted with an adhered punched blank made from

materials buffer considerably and create a highly flexible fitting process.

Expertise for the vehicle parts trade

The French VAG site in Mandelieu and the vehicle parts dealer MAP in Nice rely on the expertise of SSI Schaefer for their warehousing and workshop setups. Schaefer France recently equipped the VAG site near Cannes with an enclosed, self-bearing platform with an area of 1000 m². Michel Leroux, Head of Logistics at VAG



France: „Even at the bidding phase, we were impressed by the platform, and we are very happy with the end result. Especially as the platform layout needed to be adjusted during the fitting stage due to the uneven base.“ Olivier Pezzo,

Managing Director of MAP is also happy: „The high material quality and the flexibility of the team were definite plus points

in Schaefer's favour.“ Schaefer has already been supplying MAP for over 20 years. The initial high point was the 500 m² shelf-bearing platform with modular racking for the branch in the Niçoise region.

Crane specialists Liebherr invested 45 million Swiss Francs in relocating its Swiss site from Rothrist to Reiden. Here, SSI Schaefer Switzerland set up a compact warehouse system for spare parts supply with two-storey platform system and storage spaces for 1344 pallets. In the new spare parts warehouse with an area of 1500 m², and a height of 10 m, 22,000 items are stored, from pivoting arms to rollers and valves. Between 500 and 700 items are retrieved daily. The pallet racking is designed for large individual parts such as engines or cast components and withstands field loads up to 17 t. At a height of 7.5 m and an area of 230 m², the two-storey platform system provides 2000 running metres of storage space. The frame design and the variable boltless system permit a maximum load of 5000 kg.



Faster access to „heavyweight calibre“

DIRECT LINK-UP TO SAP



Just a few months after the contract was signed, the shell of the new warehouse area for backaldrin Österreich GmbH in Asten is taking shape. The core of the extension is the 37 m high, fully automated high rack racking with around 11,000 pallet storage spaces

in four aisles, which SSI Schaefer Noell, Giebelstadt, is implementing from turnkey planning through to the turnkey handover. The warehouse area should be finished at the end of March 2008. The project has two special features: The first is that backaldrin uses nitrogen

for fire protection. SSI Schaefer set up the warehouse for operation in a low-oxygen atmosphere. The other is that the entire warehouse management and material flow control is linked directly to the SAP LES/TRM installed at the customer's site.

DISTINCTIVE DISTRIBUTION CENTRE *for Nestlé Philippines*

Swiss food giant Nestle has just rolled out its biggest and most modern distribution centre in the Philippines. The more than



40,000 square metres Nestle North Distribution Center (NDC) is its most distinctive with an unique H design to provide for easy access. SSI Schaefer secured the contract, its largest seismic installation in the Philippines after having completed the installation at Nestle South Distribution Center in Laguna.

Like the building, the racking system has an H layout. The two vertical H strokes are equipped with Drive-In Seismic Racks extending 11 metre high to provide round 40,000 pallet locations for the storage of bulk, homogenous products. In the centre are Selective Seismic Racks of around 10 metres height with more than 7,000 pallet locations for case picking.





„INNOVATIVE LOGISTICS“



To secure its high level of delivery and service standards, the English logistics service provider Innovative Logistics decided to set up a third site in Chesterfield, Derbyshire. The project for the new logistics centre was planned and implemented by SSI Schaefer UK. Important planning principles were the optimum utilisation of the building, as well as the compatibility of the racking systems with the shelf-servicing equipment. A heavy-load mobile racking system with 10,000 pallet storage spaces was installed.



Schenker's new logistics hub in Northern Asia

Schenker was the first to establish its regional hub at the Incheon Logistics Center, a free trade zone, just minutes from the country's main airport at Incheon, Korea. The Korea Logistics Center (KLC) serves as a key hub for Schenker in North Asia and a distribution centre for Korea, to complement its network of integrated logistics centers throughout the region.

The KLC was built and equipped on a plot of 10,000 square metres. The ground level is fitted with the SSI Schaefer Selective Racking System, which provides a total of nearly 2,500 pallet locations. SSI Schaefer was selected after a competitive bid, which attracted five companies.

“For a facility like this, the reputation and experience of equipment suppliers are important,” said Mr. Rainer Kloberg, General Manager, Logistics, Schenker Korea. “The choice of SSI Schaefer was



due to a mix of reasons,” he added. “If you want good quality and good construction, testified compliance with international standards, there are only a few companies here in Asia. As long as the price is right for the quality, SSI Schaefer racks are preferred products.”

Structural steelwork for steel warehouse



Due to high demand within the steel market, Richard Austin Alloys Ltd., one of Great Britain's leading stainless steel and aluminium wholesalers, made the decision to expand their warehouse in Manchester. Following the expansion, the company will have capacities to store up to 4000 tonnes of sheet steel and steel bars at the site. The weight and size of the stored goods were critical factors in the search for a suitable ware-



housing system. In addition, the aim was to make optimum use of the available space and to offer free access to all products. SSI Schaefer UK supplied the cantilever racking system both for the existing building and for the hall extension. A special feature of the job was the two heavy load shunting systems with cantilever racking, designed for 500 tonnes of load per system.

SSI SCHAEFER plans new facility in Dubai



SSI Schaefer Middle East has revealed the latest plans for its new facility in Dubai Logistics City (DLC), which is due for completion in July 2008. The DLC is Dubai's new logistics centre, part of the Dubai World Central free trade zone, and is located in the immediate vicinity of DWC International Airport.

As one of the first companies to reserve a plot in the forthcoming logistics facility, SSI Schaefer will be constructing a new building which is set to be the regional headquarters. "DLC was chosen, cause it was felt that the exposure and future in DLC

would fit the long-term plans of SSI Schaefer in the Middle East," said Geoff Wheatley, Regional Director Middle East for SSI Schaefer.

Space and resources are also intended in the new building for the other members of the SSI Schaefer Group based in Europe, including Schaefer Waste Technology and Schaefer Automation. "The facility will reinforce SSI Schaefer's commitment in the region and allow us to continue our expansion strategy, broaden our range of services and increase staff numbers," said Wheatley.

PANALPINA on 6 continents

SCHAEFER Wins First Racking Contract in DLC

SSI Schaefer Middle East will be building the first racking system in the new Dubai Logistics City (DLC) for Panalpina when their 10,000 square meters warehouse is completed in June 2008. Very Narrow Aisle (VNA) racking with rail guidance of 11 metre heights, and a total of round 10,000 pallet locations will be installed. Panalpina's new logistics centre will be the first completed warehouse in DLC, part of the huge Dubai World Central. SSI Schaefer's first class reputation in the UAE, compliance to FEM and strict adherence to international safety standards were all significant factors to the award of the contract by Panalpina despite strong competition.



– in demand internationally

The Fraunhofer-Institut für Materialfluss und Logistik (IML; Fraunhofer Institute for Material Flow and Logistics), Dortmund, and SSI Schaefer Noell, Giebelstadt, have achieved joint sales success. The Tower 24, short-term storage site and alternative delivery address for package delivery services is planned following the completion of a re-design to supply the population in Great Britain and in Portugal. „365 Vending“ has joined forces with the two companies to market the system. The Irish company has many years of experience in the production and sale of automated transfer equipment for food and consumer goods.

Visit us

at these trade fairs 2007 | 2008

PRODUCTRONICA | MUNICH | 13. - 16.11.2007

LOGIMAT | STUTTGART | 19. - 21.02.2008

INTEC | LEIPZIG | 26. - 29.02.2008

METAV | DÜSSELDORF | 31.03. - 04.04.2008

INTERPACK | DÜSSELDORF | 24. - 30.04.2008

IFAT | MUNICH | 05. - 09.05.2008

CEMAT | HANOVER | 27. - 31.05.2008

Imprint Schaefer update

Publisher and party responsible for the content:
SSI SCHAEFER / Fritz Schaefer GmbH · D-57290 Neunkirchen
Editor: Mareike Buska – eMail mareike.buska@ssi-schaefer.de

SSI SCHÄFER

FRITZ SCHÄFER GMBH
Fritz-Schäfer-Straße 20
D-57290 Neunkirchen / Siegerland
Phone +49 / 27 35 / 70-1
Fax +49 / 27 35 / 70-576
eMail export@ssi-schaefer.de